

Beyond the Classroom: Modern Approaches to Training Delivery

1

eLearning:

Aligned with Business Outcomes



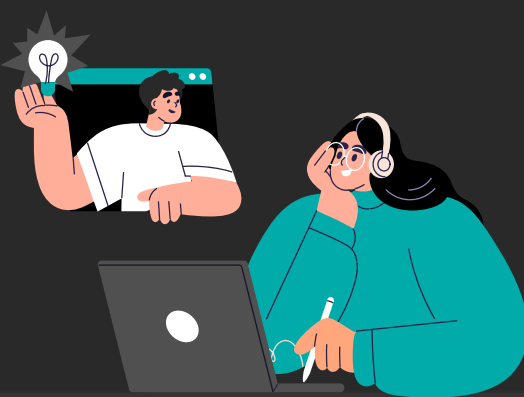
- **Remote-First Shift:** Companies reshape L&D models.
- **Business Alignment:** eLearning focuses on achieving business goals.
- **Continuous Learning:** 89% of L&D professionals emphasize skill development for future work challenges.

Source: LinkedIn Workplace Learning Report

2

Virtual Training:

Key to Future Learning



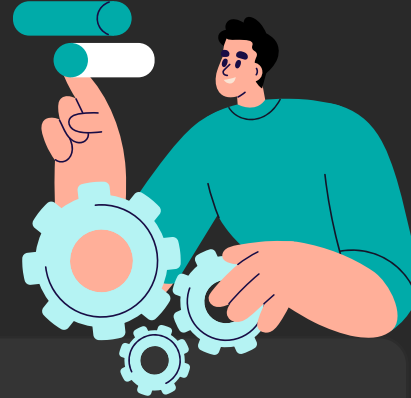
- **Flexibility & Engagement:** Offers self-paced, engaging learning.
- **Effective Training:** Reduces instruction time with better outcomes.
- **Remote Work Impact:** By 2025, 32.6 million Americans will work remotely.

Source: Upwork

3

Integrated Technologies:

Enhancing Platforms



- **Feature Integration:** Boosts user adoption and experience.
- **LMS Utilization:** Delivers customized programs.
- **Attention Span Challenge:** Corporate trainers aim to capture employee attention long enough to ensure information retention.

Source: Forbes

4

Gamification:

Boosting Retention



- **Engagement & Motivation:** Uses levels, badges, and scores.
- **Learning Impact:** Enhances learning relevance and adaptability.
- **Growth:** Expected to exceed \$24 billion by 2024.

Source: Market Forecast for Game-Based Learning

5

Mobile Learning:

Training at Fingertips



- **Convenient Access:** Reaches employees effectively.
- **Flexible Learning:** Allows self-paced, anytime, anywhere access.
- **Demand for Accessibility:** 89% of employees desire training that is available anywhere, anytime.

Source: HR Dive

6

Video-based Training:

Engaging & Effective



- **Engaging Delivery:** Uses animations and short videos.
- **Enhanced Understanding:** Visual content aids in concept clarity.
- **Top Focus Area:** Improving learner engagement ranked 7th on the L&D priorities list for 2024.

Source: LinkedIn Workplace Learning Report

7

Simulation-based Training:

Real-life Experiences



- **Immersive Learning:** Utilizes real-life-based roleplays.
- **Effective Learning:** Practical scenarios enhance hands-on experience.
- **Productivity Impact:** Simulation-based online training boosts learner performance by 72% and employee productivity by 68%.

Source: Training Industry