

# Smart Tips to Accelerate eLearning Development with Blended Learning



Organizations are acknowledging the importance of shifting from formal and traditional learning programs to creating informal and experiential learning experiences. An efficient blended learning program is a perfect medium for organizations to give high-end training that can be personalized to meet the needs of each learner.

## 01

### Ask the Right Questions

Asking the appropriate questions from the start will help create a robust plan for implementing a blended learning program. For instance, which blended learning model to use, do we have the necessary infrastructure to roll out a blended learning program, and so on.



## 02

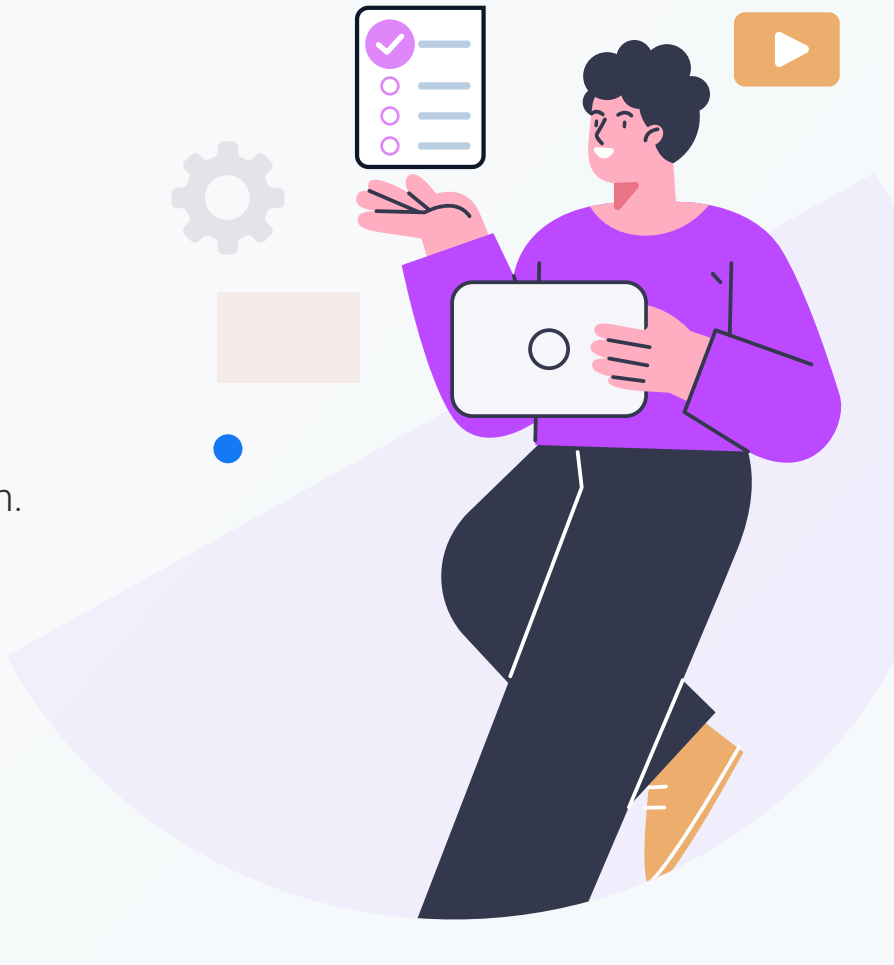
### Identify the Goals

Learning objectives or goals serve as a road map for a successful blended learning strategy. Defining the learning goals early will help narrow the relevant content and provide a clear picture of how to take eLearning development forward.

## 03

### Determine Online & Classroom Objectives

Another crucial decision in blended learning design is determining which components of the training will be delivered online and which will be taught in the classroom. A precise plan for blending objectives into two modes will help yield better training outcomes.



## 04

### Leverage Rapid eLearning Development

Rapid learning development is a faster process of developing eLearning courses. The readymade templates in rapid authoring tools help meet the customized requirements and offer a consistent look and feel throughout the courses.

## 05

### Integrate Group Collaboration Activities

Collaboration helps learners share their existing knowledge with others and benefit from their peers' skill sets. L&D leaders can use different online tools and applications (zoom breakout rooms) to incorporate group collaboration activities in a blended learning program.



## 06

### Focus on Learner Feedback

Feedback from learners on the ongoing training session and making iterations on the course is another important aspect of a successful blended learning program. This will help make the learning program more attuned to learners' needs and expectations.

## 07

### Create an Assessment Plan

No training program is complete without an assessment because checking the learners' progress is imperative. An assessment plan with what should be asked from a learner after completing the course and how to check the learner's performance is required to measure the training program's success.

